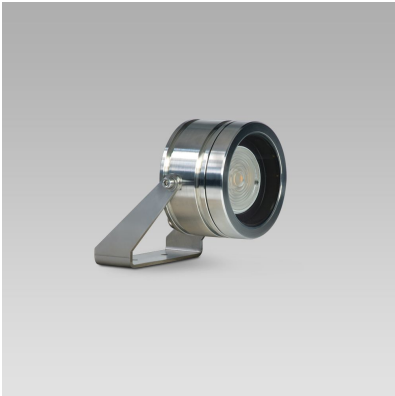


**TITO90** (Model)



**TECHNICAL INFORMATION**

[IES Files](#) 

Watt	4W – 12W
Luminaire	Up to 1600lm
CCT	3000K – 4000K
CRI	>80
Wiring	24Vcd, 350mA
LED life time	> 60000h - L80 - B20 (Ta 25°C)
Color	Stainless Steel - 30

**DESCRIPTION**

**Construction**

- AISI 316L stainless steel body and trim.
- Silicone rubber gaskets.
- AISI 316 stainless steel external screws.

**Electrical & Optics**

- High-efficacy LEDs with standard 3000K, 4000K (2700K or other CCTs available on request).
- PMMA lenses for LEDs.
- Screen made of 5/16" thermal-shock resistant tempered glass.

**Listings**

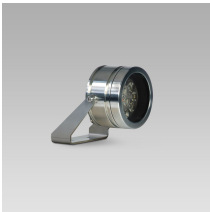
- UL certified to U.S. and Canadian standards, suitable for wet locations (cULus mark).
- Rated IP68 per EN60598.
- Luminaire rated for -40°C minimum ambient temperature.
- High quality LED sources characterized according to IES TM-30, with high color consistency <3SDCM and long useful life >60000 hours at L80.

**Installation**

- Surface installation.
- AISI 316L stainless steel bracket.
- Supplied with power cord. 22AWG conductors.

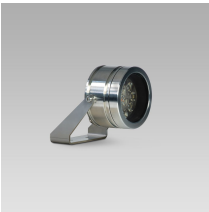


**VERSIONS** *(Click on below link to configure your product)*



[constant current](#)

Size:  
Ø 3" 19/32  
4" 1/4  
4" 21/32



[constant voltage](#)

Size:  
Ø 3" 19/32  
4" 1/4  
4" 21/32

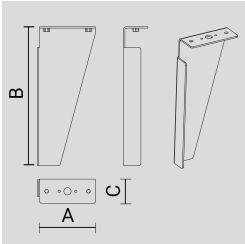
**OPTICS**



See accessories in the next page

AISI 316L STAINLESS STEEL PEG.

Arcluce Code       **1099329X**  
Code Ref.

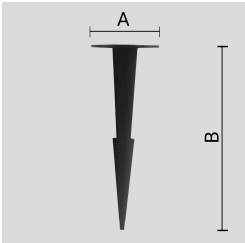


TECHNICAL INFORMATION

Weight	0.66 lb
--------	---------

THERMOPLASTIC MATERIAL PEG.

Arcluce Code       **1099257X**  
Code Ref.



TECHNICAL INFORMATION

Weight	0.11 lb
--------	---------

PAINTED AISI 316L STAINLESS-STEEL SLOPED VISOR.

Arcluce Code       **1099328X-12**  
Code Ref.

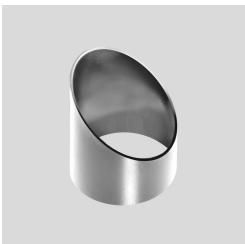


TECHNICAL INFORMATION

Color	Black - 12
Weight	0.44 lb

AISI 316L STAINLESS-STEEL SLOPED VISOR.

Arcluce Code       **1099375X-30**  
Code Ref.



TECHNICAL INFORMATION

Color	Stainless Steel - 30
Weight	0.44 lb

PAINTED ALUMINIUM HONEYCOMB LOUVRE. TO BE ORDERED TOGETHER WITH THE LUMINAIRE.

Arcluce Code       **1099348X-12**  
Code Ref.



TECHNICAL INFORMATION	
Color	Black - 12
Weight	0.11 lb

PAINTED ALUMINIUM HONEYCOMB LOUVRE. TO BE ORDERED TOGETHER WITH THE LUMINAIRE.

Arcluce Code       **1099341X-12**  
Code Ref.



TECHNICAL INFORMATION	
Color	Black - 12
Weight	0.11 lb

Arcluce Code       **1098009X**  
Code Ref.



TECHNICAL INFORMATION	
Weight	1.1 lb

Arcluce Code       **1098010X**  
Code Ref.



TECHNICAL INFORMATION	
Weight	1.1 lb