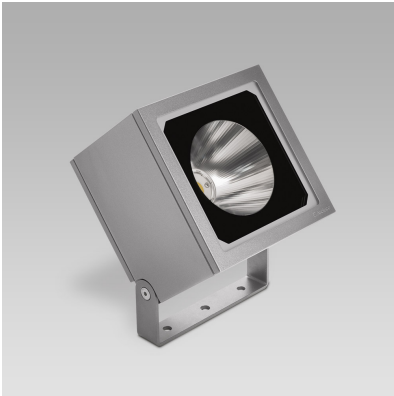


PIXOL200 (Model)



TECHNICAL INFORMATION

[IES Files](#) 

Watt	25W – 42W
Luminaire	Up to 5100lm
CCT	3000K – RGBW
CRI	>80
Wiring	120-277V 60Hz 0-10V,
LED life time	> 60000h - L80 - B20 (Ta 25°C)
Color	Grey - 16 / Aluminium - 21

DESCRIPTION

Construction

- Die-cast aluminium body and trim (EN 47100).
- Double layer polyester powder paint resistant to corrosion and salt spray fog.
- Silicone rubber gaskets.
- AISI 316 stainless steel external screws.

Electrical & Optics

- Universal input voltage: 120-277V 50/60Hz.
- 0-10V dimming available.
- Wiring on removable galvanized steel tray.
- High-efficacy LEDs with standard 3000K, 4000K (2700K or other CCTs available on request).
- Reflector made of engineering plastic metalized in high-vacuum.
- Screen made of 3/16" thermal-shock resistant tempered glass.
- Driver protected against voltage surges up to 5kV.
- PMMA lenses for LEDs for RGBW versions.

Listings

- UL certified to U.S. and Canadian standards, suitable for wet locations (cULus mark).
- Rated IP66 per EN60598.
- Luminaire rated for -25°C minimum ambient temperature.
- High quality LED sources characterized according to IES TM-30, with high color consistency <3SDCM and long useful life >60000 hours at L80.

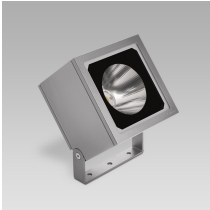
Installation

- Surface installation.
- Galvanized and painted steel bracket.
- Supplied with power cord (18AWG conductors).
- Possibility for double cable gland M20 for through wiring.

IP66



VERSIONS *(Click on below link to configure your product)*



[performance](#)

Size:

- 9" 27/32
- 6" 5/16
- 7" 7/8

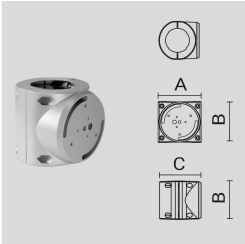
OPTICS



See accessories in the next page

PAINTED DIE-CAST ALUMINIUM AND STEEL SINGLE POLE ATTACHMENT (Ø 102 MM).

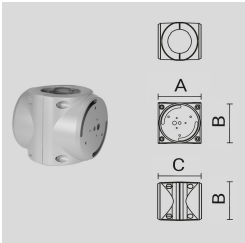
Arcluce Code **1099472X-16**
Code Ref.



TECHNICAL INFORMATION	
Color	Grey - 16
Weight	3.75 lb

PAINTED DIE-CAST ALUMINIUM AND STEEL DOUBLE POLE ATTACHMENT (Ø 102 MM) .

Arcluce Code **1099473X-16**
Code Ref.



TECHNICAL INFORMATION	
Color	Grey - 16
Weight	4.63 lb

PAINTED STEEL SUPPORT BRACKET FOR ROOF EAVES.

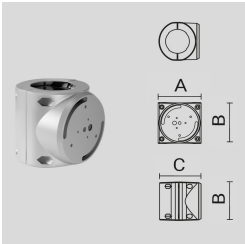
Arcluce Code **1099154X-16**
Code Ref.



TECHNICAL INFORMATION	
Color	Grey - 16
Weight	1.76 lb

PAINTED DIE-CAST ALUMINIUM AND STEEL SINGLE POLE ATTACHMENT (Ø 102 MM).

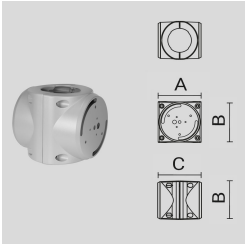
Arcluce Code **1099472X-21**
Code Ref.



TECHNICAL INFORMATION	
Color	Aluminium - 21
Weight	3.75 lb

PAINTED DIE-CAST ALUMINIUM AND STEEL DOUBLE POLE ATTACHMENT (Ø 102 MM) .

Arcluce Code **1099473X-21**
Code Ref.

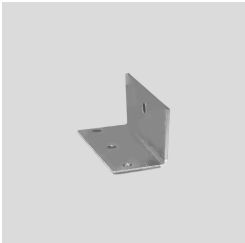


TECHNICAL INFORMATION

Color	Aluminium - 21
Weight	4.63 lb

PAINTED STEEL SUPPORT BRACKET FOR ROOF EAVES.

Arcluce Code **1099154X-21**
Code Ref.



TECHNICAL INFORMATION

Color	Aluminium - 21
Weight	1.76 lb