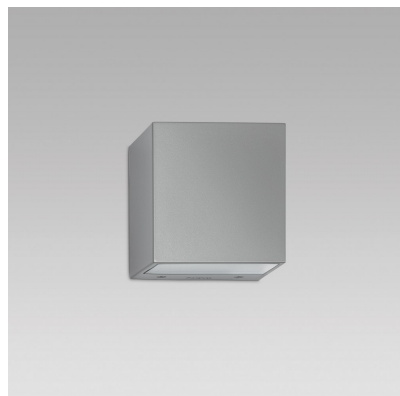


PIXOL150 (Model)



TECHNICAL INFORMATION

[IES Files](#)

Watt	31W
Luminaire	Up to 3400lm
CCT	3000K – 4000K
CRI	>80
Wiring	120-277V 60Hz 0-10V
LED life time	> 60000h - L80 - B20 (Ta 25°C)
Color	White - 11 / Grey - 16 / Aluminium - 21

DESCRIPTION

Construction

- Die-cast aluminium body (EN 47100).
- Double layer polyester powder paint resistant to corrosion and salt spray fog.
- Silicone rubber gaskets.
- AISI 316 stainless steel external screws.

Electrical & Optics

- Universal input voltage: 120-277V 50/60Hz.
- 0-10V dimming available.
- Wiring on removable galvanized steel tray.
- High-efficacy LEDs with standard 3000K, 4000K (2700K or other CCTs available on request).
- PMMA lenses for LEDs.
- Screen made of 3/16" thermal-shock resistant tempered glass.
- Driver protected against voltage surges up to 5kV.

Listings

- UL certified to U.S. and Canadian standards, suitable for wet locations (cULus mark).
- Rated IP66 per EN60598.
- Luminaire rated for -25°C minimum ambient temperature.
- High quality LED sources characterized according to IES TM-30, with high color consistency <3SDCM and long useful life >60000 hours at L80.

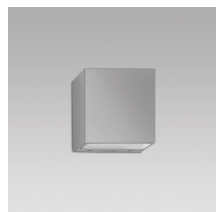
Installation

- Wall mounted.
- Die-cast aluminium base (EN 47100) for anchoring with rawlplugs.
- Universal plate for mounting on standard junction boxes (accessory).
- Spacer for side-entry of conduits (accessory).

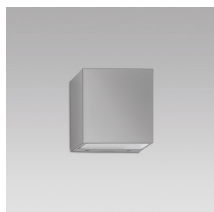
IP66



VERSIONS *(Click on below link to configure your product)*



[oneway](#)



[twoway](#)

Size:

- 5" 29/32
- 3" 15/16
- 5" 29/32

Size:

- 5" 29/32
- 3" 15/16
- 5" 29/32

OPTICS

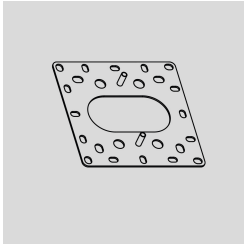


See accessories in the next page

ADAPTER PLATE FOR INSTALLATION ON ELECTRICAL BOXES.

Arcluce Code **1099622X**

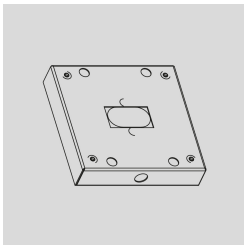
Code Ref.

**TECHNICAL INFORMATION****Weight** 1.1 lb

BASE PLATE FOR WALL/CEILING APPLICATION FOR SIDE ENTRY OF POWER CABLE - WHITE

Arcluce Code **1099626X-11**

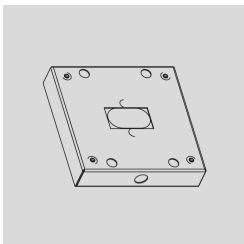
Code Ref.

**TECHNICAL INFORMATION****Color** White - 11**Weight** 1.76 lb

BASE PLATE FOR WALL/CEILING APPLICATION FOR SIDE ENTRY OF POWER CABLE - GREY, SIMILAR TO (RAL 7024)

Arcluce Code **1099626X-16**

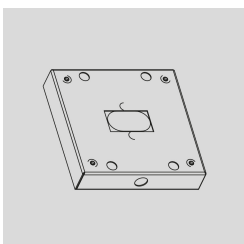
Code Ref.

**TECHNICAL INFORMATION****Color** Grey - 16**Weight** 1.76 lb

BASE PLATE FOR WALL/CEILING APPLICATION FOR SIDE ENTRY OF POWER CABLE - ALUMINIUM (RAL 9005)

Arcluce Code **1099626X-21**

Code Ref.

**TECHNICAL INFORMATION****Color** Aluminium - 21**Weight** 1.76 lb