

KOMPASS Bollard (Model)



TECHNICAL INFORMATION

[IES Files](#)

Watt	4W – 30W
Luminaire	Up to 425lm
CCT	3000K – 4000K
CRI	>80
Wiring	120-277V 60Hz
LED life time	> 60000h - L80 - B20 (Ta 25°C)
Color	Aluminium - 21 / Grey - 16

DESCRIPTION

Construction

- Extruded aluminium body.
- Die-cast aluminium caps (EN 47100).
- Double layer polyester powder paint resistant to corrosion and salt spray fog.
- Silicone rubber gaskets.
- AISI 316 stainless steel external screws.

Electrical & Optics

- High-efficacy LEDs with standard 3000K, 4000K (2700K or other CCTs available on request).
- Screen made of 5/16" thermal-shock resistant tempered glass.

Listings

- UL certified to U.S. and Canadian standards, suitable for wet locations (cULus mark).
- Suitable for mounting within 1.2 m (4 ft) of ground.
- Rated IP66 per EN60598.
- Luminaire rated for -20°C minimum ambient.
- High quality LED sources characterized according to IES TM-30, with high color consistency <3SDCM and long useful life >60000 hours at L80.

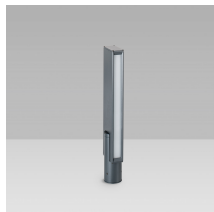
Installation

- Surface installation.
- Die-cast aluminium base (EN 47100) for anchoring with rawlplugs.

IP66

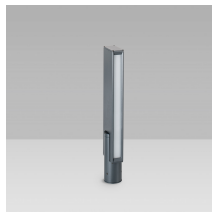


VERSIONS *(Click on below link to configure your product)*



[comfort+](#)

Size:
5" 29/32
4" 1/32
19" 11/32 to 42" 13/32



[comfort](#)

Size:
5" 29/32
4" 1/32
19" 11/32 to 42" 13/32

OPTICS

