

TITO25 (Model)



TECHNICAL INFORMATION

[IES Files](#) 

Watt	2W
Luminaire	Up to 225lm
CCT	3000K – 4000K
CRI	>80
Wiring	700mA
LED life time	> 60000h - L80 - B20 (Ta 25°C)
Color	Stainless Steel - 30

DESCRIPTION

Construction

- AISI 316L stainless steel body and trim.
- Silicone rubber gaskets.
- AISI 316 stainless steel external screws.

Electrical & Optics

- High-efficacy LEDs with standard 3000K, 4000K (2700K or other CCTs available on request).
- PMMA lenses for LEDs.
- Clear PMMA screen.
- To be operated only with constant current 700mA Class 2 remote drivers (order separately).

Listings

- UL certified to U.S. and Canadian standards, suitable for wet locations (cULus mark).
- Rated IP68 per EN60598.
- Luminaire rated for -40°C minimum ambient temperature.
- High quality LED sources characterized according to IES TM-30, with high color consistency <3SDCM and long useful life >60000 hours at L80.

Installation

- Surface installation.
- AISI 316L stainless steel bracket.
- Supplied with power cord. 22AWG conductors.

IP68
40"



VERSIONS *(Click on below link to configure your product)*



[tito25](#)

Size:
Ø 0" 31/32
2" 1/4
3" 1/32

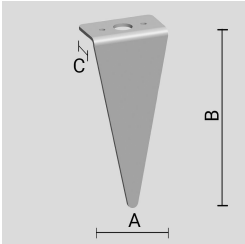
OPTICS



See accessories in the next page

AISI 316L STAINLESS STEEL PEG.

Arcluce Code **1099256X**
Code Ref. **W9070**



TECHNICAL INFORMATION

Weight	0.18 lb
--------	---------

PAINTED AISI 316L STAINLESS-STEEL SLOPED VISOR.

Arcluce Code **1099340X-12**
Code Ref. **W9075-12**

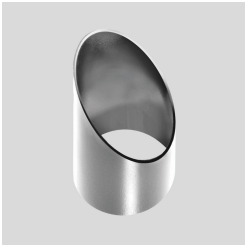


TECHNICAL INFORMATION

Color	Black - 12
Weight	0.11 lb

AISI 316L STAINLESS-STEEL SLOPED VISOR.

Arcluce Code **1099376X-30**
Code Ref. **W9075-30**

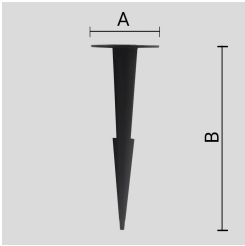


TECHNICAL INFORMATION

Color	Stainless Steel - 30
Weight	0.11 lb

THERMOPLASTIC MATERIAL PEG.

Arcluce Code **1099257X**
Code Ref. **W9970**



TECHNICAL INFORMATION

Weight	0.11 lb
--------	---------