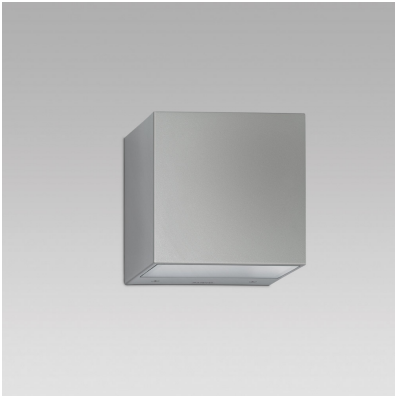


PIXOL200 (Model)



TECHNICAL INFORMATION

[IES Files](#) 

Watt	28W – 68W
Luminaire	Up to 7000lm
CCT	3000K – 4000K
CRI	>80
Wiring	120-277V 60Hz 0-10V
LED life time	> 60000h - L80 - B20 (Ta 25°C)
Color	Aluminium - 21 / Grey - 16 / White - 11

DESCRIPTION

Construction

- Die-cast aluminium body (EN 47100).
- Double layer polyester powder paint resistant to corrosion and salt spray fog.
- Silicone rubber gaskets.
- AISI 316 stainless steel external screws.

Electrical & Optics

- Universal input voltage: 120-277V 50/60Hz.
- 0-10V dimming available.
- Wiring on removable galvanized steel tray.
- High-efficacy LEDs with standard 3000K, 4000K (2700K or other CCTs available on request).
- PMMA lenses for LEDs.
- Screen made of 3/16" thermal-shock resistant tempered glass.
- Driver protected against voltage surges up to 5kV.

Listings

- UL certified to U.S. and Canadian standards, suitable for wet locations (cULus mark).
- Rated IP66 per EN60598.
- Luminaire rated for -25°C minimum ambient temperature.
- High quality LED sources characterized according to IES TM-30, with high color consistency <3SDCM and long useful life >60000 hours at L80.

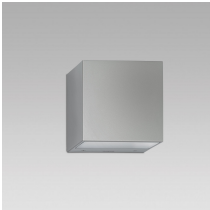
Installation

- Wall mounted.
- Die-cast aluminium base (EN 47100) for anchoring with rawlplugs.
- For bidirectional versions, wiring in double switch.
- Universal plate for mounting on standard junction boxes (accessory).
- Spacer for side-entry of conduits (accessory).
- Possibility for double cable gland M20 for through wiring.

IP66

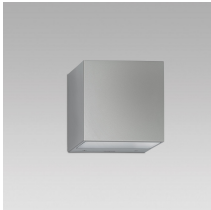


VERSIONS *(Click on below link to configure your product)*



[oneway](#)

Size:
7" 7/8
7" 7/8
5" 1/2



[twoway](#)

Size:
7" 7/8
7" 7/8
5" 1/2

OPTICS



See accessories in the next page

BASE PLATE FOR WALL/CEILING APPLICATION FOR SIDE ENTRY OF POWER CABLE - ALUMINIUM (RAL 9005)

Arcluce Code **1099627X-21**
Code Ref.

TECHNICAL INFORMATION

Color	Aluminium - 21
Weight	1.76 lb

Arcluce Code **1099628X**
Code Ref.

TECHNICAL INFORMATION

Weight	1.1 lb
--------	--------

BASE PLATE FOR WALL/CEILING APPLICATION FOR SIDE ENTRY OF POWER CABLE - GREY, SIMILAR TO (RAL 7024)

Arcluce Code **1099627X-16**
Code Ref.

TECHNICAL INFORMATION

Color	Grey - 16
Weight	1.76 lb

BASE PLATE FOR WALL/CEILING APPLICATION FOR SIDE ENTRY OF POWER CABLE - WHITE

Arcluce Code **1099627X-11**
Code Ref.

TECHNICAL INFORMATION

Color	White - 11
Weight	1.76 lb