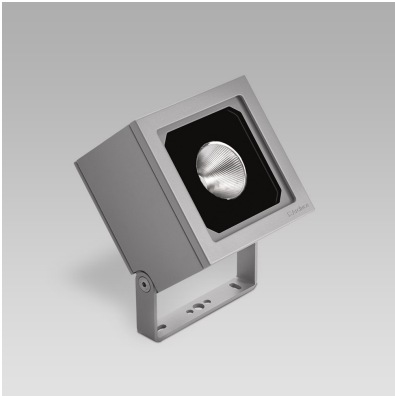


PIXOL150 (Model)



TECHNICAL INFORMATION

[IES Files](#) 

Watt	31W
Luminaire	Up to 3250lm
CCT	3000K – 4000K
CRI	>80
Wiring	120-277V 60Hz 0-10V
LED life time	> 60000h - L80 - B20 (Ta 25°C)
Color	Grey - 16 / Aluminium - 21

DESCRIPTION

Construction

- Die-cast aluminium body and trim (EN 47100).
- Double layer polyester powder paint resistant to corrosion and salt spray fog.
- Silicone rubber gaskets.
- AISI 316 stainless steel external screws.

Electrical & Optics

- Universal input voltage: 120-277V 50/60Hz.
- 0-10V dimming available.
- Wiring on removable galvanized steel tray.
- High-efficacy LEDs with standard 3000K, 4000K (2700K or other CCTs available on request).
- Reflector made of engineering plastic metalized in high-vacuum.
- Screen made of 3/16" thermal-shock resistant tempered glass.
- Driver protected against voltage surges up to 5kV.

Listings

- UL certified to U.S. and Canadian standards, suitable for wet locations (cULus mark).
- Rated IP66 per EN60598.
- Luminaire rated for -25°C minimum ambient temperature.
- High quality LED sources characterized according to IES TM-30, with high color consistency <3SDCM and long useful life >60000 hours at L80.

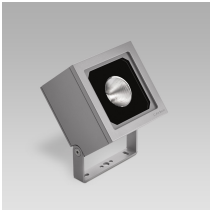
Installation

- Surface installation.
- Galvanized and painted steel bracket.
- Supplied with power cord (18AWG conductors).
- Possibility for double cable gland M20 for through wiring.

IP66



VERSIONS *(Click on below link to configure your product)*



[performance](#)

Size:

5" 29/32

7" 7/8

4" 17/32

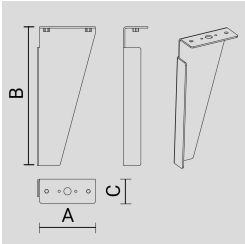
OPTICS



See accessories in the next page

AISI 316L STAINLESS STEEL PEG.

Arcluce Code **1099329X**
Code Ref. **W9074**

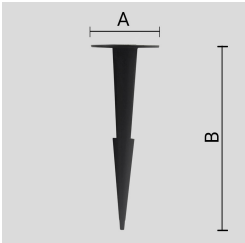


TECHNICAL INFORMATION

Weight 0.66 lb

THERMOPLASTIC MATERIAL PEG.

Arcluce Code **1099257X**
Code Ref. **W9970**



TECHNICAL INFORMATION

Weight 0.11 lb
