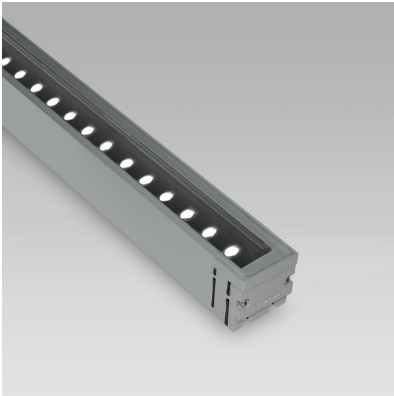


KRION short (Model)



TECHNICAL INFORMATION

[IES Files](#) 

Watt	12W – 48W
Luminaire	Up to 6200lm
CCT	3000K – 4000K
CRI	>80
Wiring	CV 24V REM-D
LED life time	> 60000h - L80 - B20 (Ta °C)
Color	Aluminium - 21 / Grey - 16

DESCRIPTION

Construction

- Extruded aluminium body.
- Die-cast aluminium caps (EN 47100).
- Double layer polyester powder paint resistant to corrosion and salt spray fog.
- Silicone rubber gaskets.
- AISI 316 stainless steel external screws.
- Goniometer scale to aim light.

Electrical & Optics

- High-efficacy LEDs with standard 3000K, 4000K (2700K or other CCTs available on request).
- PMMA lenses for LEDs.
- Screen made of 5/16" thermal-shock resistant tempered glass.
- To be operated only with constant voltage 24Vdc Class 2 remote drivers (order separately).

Listings

- UL certified to U.S. and Canadian standards, suitable for wet locations (cULus mark).
- Suitable for mounting within 1.2 m (4 ft) of ground.
- Rated IP66 per EN60598.
- Luminaire rated for -20°C minimum ambient.
- High quality LED sources characterized according to IES TM-30, with high color consistency <3SDCM and long useful life >60000 hours at L80.

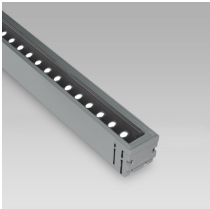
Installation

- Surface installation.
- Supplied with power cord. 22AWG conductors.
- Support brackets to be ordered separately.

IP66



VERSIONS *(Click on below link to configure your product)*



[performance](#)

Size:
2" 17/32
3" 1/32
13" 5/8 to 48" 7/32

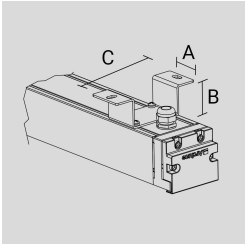
OPTICS



See accessories in the next page

PAINTED STEEL SUPPORT BRACKETS (2 PCS).

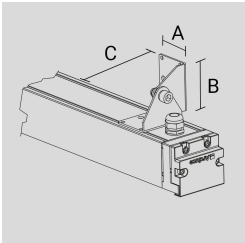
Arcluce Code **1099393X-21**
Code Ref.



TECHNICAL INFORMATION	
Color	Aluminium - 21
Weight	0.44 lb

PAINTED STEEL REVOLVING SUPPORT BRACKETS (2 PCS).

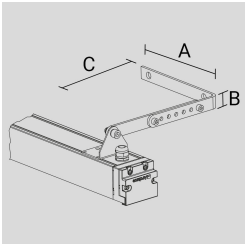
Arcluce Code **1099394X-21**
Code Ref.



TECHNICAL INFORMATION	
Color	Aluminium - 21
Weight	0.44 lb

PAINTED REVOLVING STEEL AND EXTENSIBLE SUPPORT BRACKETS (2 PCS).

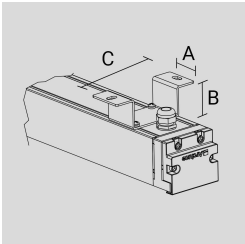
Arcluce Code **1099395X-21**
Code Ref.



TECHNICAL INFORMATION	
Color	Aluminium - 21
Weight	2.43 lb

PAINTED STEEL SUPPORT BRACKETS (2 PCS).

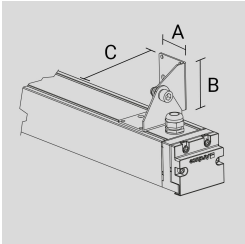
Arcluce Code **1099393X-16**
Code Ref.



TECHNICAL INFORMATION	
Color	Grey - 16
Weight	0.44 lb

PAINTED STEEL REVOLVING SUPPORT BRACKETS (2 PCS).

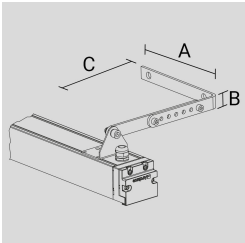
Arcluce Code **1099394X-16**
Code Ref.



TECHNICAL INFORMATION	
Color	Grey - 16
Weight	0.44 lb

PAINTED REVOLVING STEEL AND EXTENSIBLE SUPPORT BRACKETS (2 PCS).

Arcluce Code **1099395X-16**
Code Ref.



TECHNICAL INFORMATION	
Color	Grey - 16
Weight	2.43 lb