

DUEDIECI (Model)



TECHNICAL INFORMATION

[IES Files](#) 

Watt	21W
Luminaire	Up to 2000lm
CCT	3000K – 4000K
CRI	>80
Wiring	120-277V 60Hz 0-10V
LED life time	> 60000h - L80 - B20 (Ta 25°C)
Color	Aluminium - 21 / Grey - 16

DESCRIPTION

Construction

- Die-cast aluminium body and trim (EN 47100).
- Double layer polyester powder paint resistant to corrosion and salt spray fog.
- Silicone rubber gaskets.
- AISI 316 stainless steel external screws.
- Goniometer scale to aim light.

Electrical & Optics

- Universal input voltage: 120-277V 50/60Hz.
- 0-10V dimming available.
- Wiring on removable galvanized steel tray.
- High-efficacy LEDs with standard 3000K, 4000K (2700K or other CCTs available on request).
- Reflector made of engineering plastic metalized in high-vacuum.
- Screen made of 5/16" thermal-shock resistant tempered glass.

Listings

- UL certified to U.S. and Canadian standards, suitable for wet locations (cULus mark).
- Suitable for mounting within 1.2 m (4 ft) of ground.
- Rated IP66 per EN60598.
- Luminaire rated for -30°C minimum ambient.
- High quality LED sources characterized according to IES TM-30, with high color consistency <3SDCM and long useful life >60000 hours at L80.

Installation

- Surface installation.
- Die-cast aluminium base (EN 47100) for anchoring with rawlplugs.
- Available accessory for mounting on standard junction boxes.
- Supplied with power cord (18AWG conductors).

IP66



0.43 ft²

VERSIONS *(Click on below link to configure your product)*



[driver included](#)

Size:
Ø 4" 11/32
9" 7/8
5" 5/16

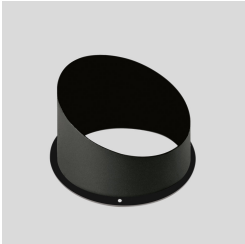
OPTICS



See accessories in the next page

PAINTED ALUMINIUM SLOPED VISOR.

Arcluce Code **1099198X-12**
Code Ref. **W9500-12**



TECHNICAL INFORMATION	
Color	Black - 12
Weight	0.04 lb

ALUMINIUM HONEYCOMB LOUVRE WITH PAINTED STEEL EDGE.

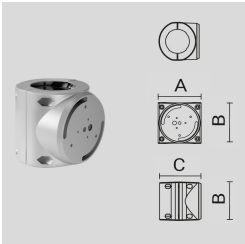
Arcluce Code **1099346X-12**
Code Ref.



TECHNICAL INFORMATION	
Color	Black - 12
Weight	0.04 lb

PAINTED DIE-CAST ALUMINIUM SINGLE POLE ATTACHMENT (Ø 102 MM).

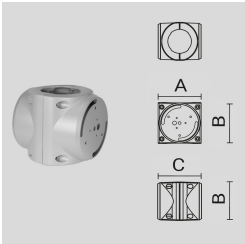
Arcluce Code **1099466X-21**
Code Ref.



TECHNICAL INFORMATION	
Color	Aluminium - 21
Weight	3.31 lb

PAINTED DIE-CAST ALUMINIUM DOUBLE POLE ATTACHMENT (Ø 102 MM).

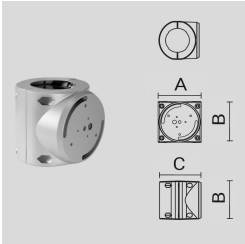
Arcluce Code **1099467X-21**
Code Ref.



TECHNICAL INFORMATION	
Color	Aluminium - 21
Weight	3.97 lb

PAINTED DIE-CAST ALUMINIUM SINGLE POLE ATTACHMENT (Ø 102 MM).

Arcluce Code **1099466X-16**
Code Ref.

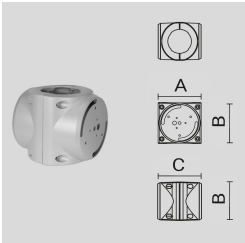


TECHNICAL INFORMATION

Color	Grey - 16
Weight	3.31 lb

PAINTED DIE-CAST ALUMINIUM DOUBLE POLE ATTACHMENT (Ø 102 MM).

Arcluce Code **1099467X-16**
Code Ref.



TECHNICAL INFORMATION

Color	Grey - 16
Weight	3.97 lb